

R:\1511 - Parel - New Stanton Hotel\03_Design (DWG)\1511 - Parel-New Stanton - Base.dwg Plotted: Jul 11, 2016 - 4:14pm



Know what's below.
Call before you dig.

IF THIS DRAWING IS LESS THAN 24" X 36" IT IS A REDUCED SIZE DRAWING

BROADVIEW 33' ROAD
(BITUMINOUS PAVEMENT)

N CENTER AVENUE

NOW OR FORMERLY
BRUCE P. AND BETTY L. CAMERON
TAX ID. 64-03-00-0-47
ZONED B-1

NOW OR FORMERLY
CARROL L. WANGUS AND
SUSAN E. SMITH
TAX ID. 64-03-00-0-48
ZONED B-1

NOW OR FORMERLY
ROBERT D. AND MARY QUINN
TAX ID. 64-03-00-0-49
ZONED B-1

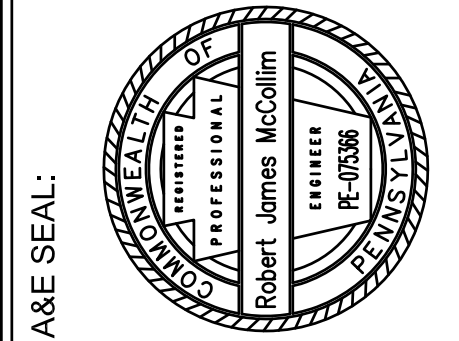
NOW OR FORMERLY
ROBERT D. & MARY A. QUINN
TAX ID. 64-03-00-0-84
ZONED B-1

NOW OR FORMERLY
ADIRONDACK PARTNERS LLC
TAX ID. 64-03-00-0-79
ZONED B-1

NOW OR FORMERLY
BOROUGH OF NEW STANTON
TAX ID. 64-04-00-0-90
ZONED B-1

NOW OR FORMERLY
BOB EVANS FARMS, INC.
TAX ID. 64-03-00-0-85

4 STORY HAMPTON INN & SUITES
84 GUEST ROOMS
FF=1023.5



ACKNOWLEDGEMENT OR "SIGN-OFF" BY
PARTIES TO THE CONSTRUCTION
DOCUMENTS IS REQUIRED FOR
ALTERATION OF LEASE TERMS.
THE INFORMATION CONTAINED IN THIS
SET OF DOCUMENTS IS PROPRIETARY
BY NATURE. ANY USE OR DISCLOSURE
OTHER THAN THAT WHICH RELATES TO
THE PROJECT DESCRIBED HEREIN
IS A VIOLATION OF LAW FOR ANY
PERSON UNLESS THEY ARE WORKING
UNDER THE DIRECTION OF A LICENSED
PROFESSIONAL ENGINEER TO ALTER
THIS DOCUMENT.

HAMPTON INN & SUITES

BAIR BOULEVARD
NEW STANTON, PA 15672
WESTMORELAND COUNTY, PENNSYLVANIA

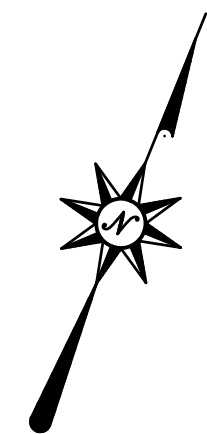
REVISIONS:		REVISED PER MUNICIPAL COMMENTS	
MARK	DATE	DESCRIPTION	
1	7/11/2016		

PROJ NO: 1511
SCALE: AS SHOWN
DATE: 5/18/2016
DESIGNED BY: RJM
DRAWN BY: MJN
CHECKED BY: CKM

SHEET TITLE:

VEHICULAR TURNING PLAN

SHEET NO.
C2.3



GRAPHIC SCALE
0 20 40 80
(IN FEET)
1 inch = 40 ft.



CALL BEFORE YOU DIG!
PENNSYLVANIA LAW REQUIRES
3 WORKING DAYS NOTICE FOR
CONSTRUCTION PHASE AND 10 WORKING
DAYS NOTICE IN DESIGN STAGE.
STOP CALL
PENNSYLVANIA ONE CALL SYSTEM, INC.
1-800-242-1776